

A.R.I. NR-47

 **Aquestia**
Directing the Flow



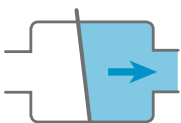
Removable Cover Check Valve

A.R.I. NR-47 is a Resilient Disc Check Valve for potable water applications such as pumping stations, surge protection along the pipeline and more. It allows for one-directional flow, preventing the return flow of liquid to its source. The valve features a removable upper cover which enables cleaning and maintenance without removing the valve from the pipeline. The resilient rubber-coated valve disc attaches to a shaft, which is locked into the valve body. Sealing is performed as the disc closes against the valve seat; located at the inlet to the body.

Installation

- Pumping stations for potable water
- At consumer connections and as an isolation valve along the pipeline
- Filtration systems and water treatment facilities

Operation



One-way

Features and Benefits

- Minimal energy losses and smooth water flow, achieved by the complete elevation of the disc into the upper cover opening.
- Vulcanized disc - for sealing at low pressure and preventing wear of the sealing area.
- The disc is reversible - doubling the lifetime for use.
- Soft sealing according to standard EN 12334.
- Rubber stoppers restrain the movement of the disc at the maximum opening height; no contact between coated metal parts prevents damage to the coating.
- Can be mounted horizontally and vertically.
- Suitable for different types of liquids.

Technical Specifications

Size range	2" – 20"
Working pressure range	Working pressure range: 6/10/16 bar Testing pressure: 1.5 times maximum working pressure
Temperature	Maximum working temperature: 60° C
Valve coating	Fusion bonded epoxy coating in compliance with standard DIN 30677-2

For best suitability, it is recommended to send the fluid chemical properties along with the valve request.

Upon ordering, please specify: model, size, working pressure, thread / flange standard and type of liquid.

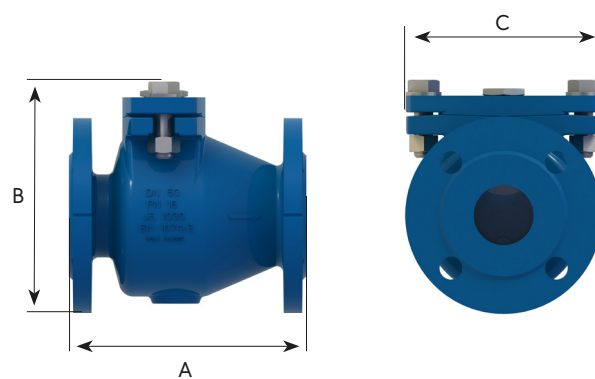
Valve Selection Options

- Manufactured according to any standard flange requirement
- Limit switch add-on

➤ Dimensions and Weight

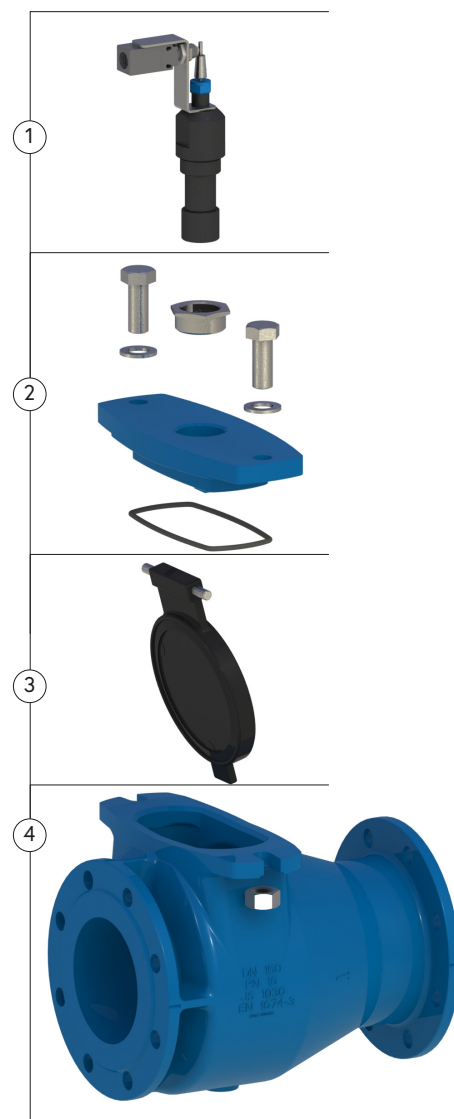
Size	Dimensions (mm)			Weight (kg)
	A	B	C	
2" (50mm)	200	190	164	12
2½" (65 mm)	240	209	186	16
3" (80 mm)	260	230	200	20
4" (100 mm)	300	265	225	28.5
5" (125 mm)	350	332	304	48
6" (150 mm)	400	350	340	60.5
8" (200 mm)	500	456	400	116
10" (250 mm)	600	520	464	162
12" (300 mm)	700	567	504	222
14" (350 mm)	800	771	585	300
16" (400 mm)	900	833	660	425
20" (500 mm)	1100	954	770	618

NOTE All product weights and dimensions are approximate, due to the differences in flange standards, materials and variable accessories.



Parts List and Specifications | 2"-12"

No.	Part	Material
1	Limit Switch Assembly	Reinforced Nylon + Acetal + Stainless Steel 316
2	Cover Assembly	
2a	Bushing	Stainless Steel 316
2b	Bolts, Nuts and Washers	Stainless Steel 316
2c	Cover	Ductile Iron
2d	Gasket	EPDM
3	Flap	Ductile Iron + EPDM Coated
4	Body	Ductile Iron



➤ Parts List and Specifications | 14"-20"

No.	Part	Material
1	Cover Assembly	
1a	Cover	Ductile Iron
1b	Gasket	EPDM
2	Flap Assembly	
2a	Bearing	Brass
2b	Shaft	Stainless Steel 316
2c	Flap	Ductile Iron + EPDM Coated
3	Body Assembly	
3a	Limit Switch Assembly	Reinforced Nylon + Acetal + Stainless Steel 316
3b	Bolts,Nuts and Washers	Ductile Iron
3c	Body	Ductile Iron

