

Pressure-reducing, 2-way metal pilot-valve

The 68-410 is a 2-way, diaphragm actuated, spring-loaded pressure reducing pilot-valve, designed for control of hydraulic-valves. The pilot valve modulates to keep a steady, pre-set downstream pressure. As the downstream pressure falls below the set point, the pilot valve opens the water passage between its "IN" and "OUT" ports thus allowing the water in the main valve's chamber to vent to the downstream, and open the main valve. As the downstream pressure rises above the set point, the pilot-valve throttles the internal passage, restricting the flow out of the main valve control chamber, enabling the valve to keep its position or to close (if necessary).

Features

- A compact-design, pressure reducing 2-way pilot valve
- Normally-open, allows water passage when downstream pressure is lower than the adjusted spring setting
- Wide regulation range
- Accurate and easy to adjust
- No internal sealing allows for maximal dependability



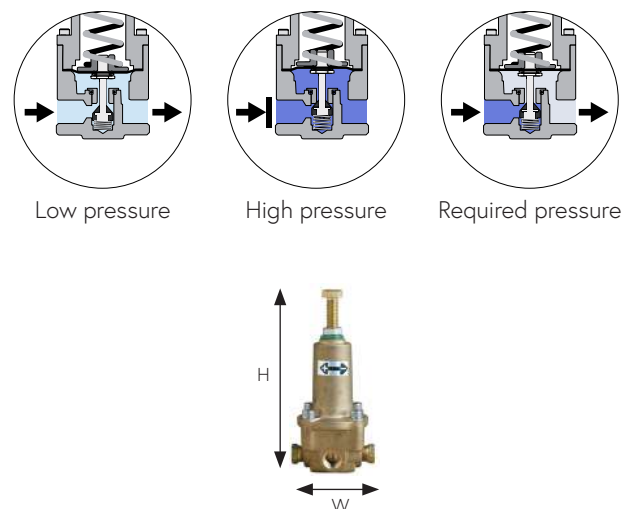
Typical applications

- Pressure reducing - PR

Technical data

General		
Pressure rating	25 bar / 360 psi	
Pressure adjustment range	0.5 - 25 bar / 7 - 360 psi	
Fluid temperature	60°C max. / 140°F max.	
Weight	0.84 Kg / 1.85 lbs	
Materials	Stabdard	Optional*
Body and bonnet	Brass	SST
Elastomers	EPDM	NBR, Viton
Internal parts	SST	
Spring	SST	
Dimensions		
H (Height) max.	155 mm / 6.10"	
W (Width)	55 mm / 2.17"	
Port Connections		
I1, I2, O1, O2	NPT1/4"	

* other materials available upon demand



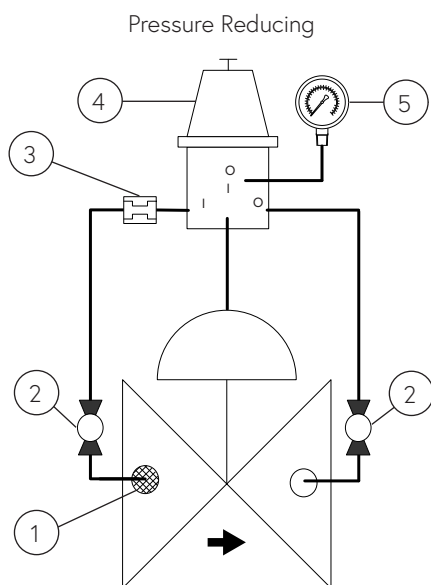
Installation

Main components

#	Description
1	Self flushing filter
2	Isolation ball valve
3	Orifice / Needle valve
4	68-410 Pilot valve
5	Pressure gauge (optional)

Connections

Port	Pressure Reducing
I1	Valve control chamber
I2	Upstream (through orifice)
O	Downstream
O2	Pressure gauge (optional)



Sample drawing. Consult Dorot for the assembly design to fit your needs.

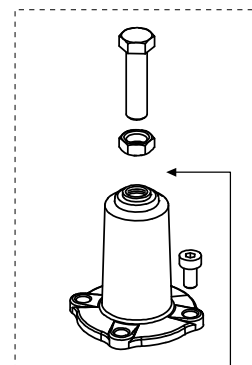
Springs adjustment range

Spring number	Color	bar	psi
66 (Std.)	Green	1 - 11	15 - 160
78	Yellow	0.5 - 3	7 - 45
67	Red	2 - 25	30 - 360

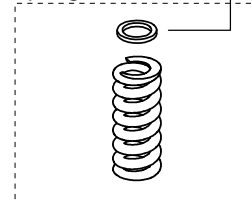
Adjustment: Turn the adjusting screw clockwise to increase the set point

Spare parts

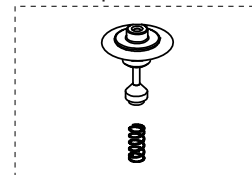
Bonnet kit



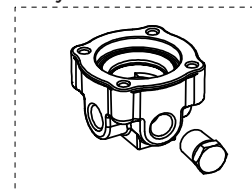
Spring



Internal parts kit



Body kit



Catalogue numbers

Description	Catalogue number
Bonnet kit	661026841000000
Spring 66 - Green	0022066000
Spring 78 - Yellow	0022078000
Spring 67 - Red	0022067000
Internal parts kit	661206841000000
Body kit	661016841000000