

## Quick-acting, 2-way pressure-relief metal pilot-valve

The 68-215 is a 2-way, diaphragm actuated, spring-loaded pilot-valve designed for control of hydraulic-valves. The pilot valve keeps a normally closed position, as long as the pressure in the system is below the adjusted set-value. Once the pressure exceeds the setpoint, the pilot will open fully, allowing fast discharge of water out of the main valve's control chamber, thus causing the valve to open, discharging surplus pressure out of the system. The 68-215 pilot will then re-close, keeping but a narrow passage for the upstream-water to enter the main valve's control chamber, making its closure pace slow.

### Features

- Integral design - the pilot valve connects directly to the main valve's bonnet
- A quick-acting, pressure relief 2-way pilot valve
- Normally-closed, will opens fully when the upstream pressure exceeds the adjustable spring setting
- The design allows connection without having to install additional needle-valve or orifice
- Can be used with 1.5"/40mm - 4"/100mm, 100 series hydraulic control valves
- Wide regulation range
- Accurate and easy to adjust
- Minimal internal sealing and maximal dependability

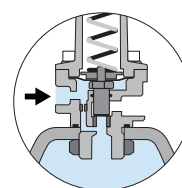


### Typical applications

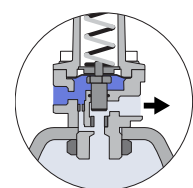
- Quick pressure relief - QR

### Technical data

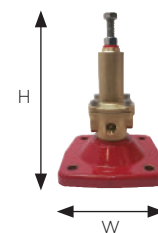
General		
Pressure rating	16 bar / 230 psi	
Pressure adjustment range	0.4 - 16 bar / 6 - 230 psi	
Fluid temperature	80°C max. / 176°F max.	
Weight	850 g. / 1.9 lbs.	
Materials	Standard	Optional*
Body and bonnet	Brass	SST
Elastomers	EPDM	EPDM, Viton
Internal parts	SST	
Spring	SST	
Dimensions		
H (Height) max.	180 mm / 7"	
W (Width)	72 mm / 3"	
Port Connections		
I, O, C	NPT 1/4"	



Low pressure



High pressure



\* other materials available upon demand

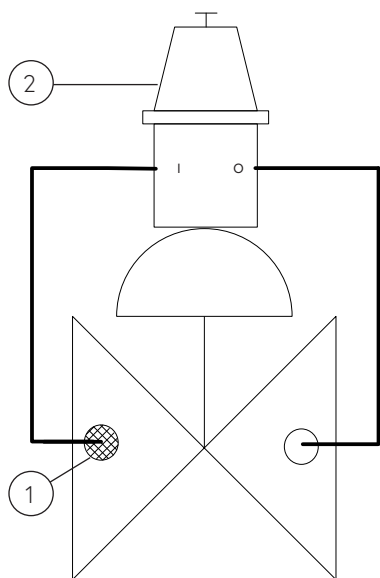
## Installation

### Main components

#	Description
1	Self flushing filter
2	68-215 Pilot valve

### Connections

Port	
I	Upstream
C	Valve control chamber
O	Downstream



Quick Relief

Sample drawing. Consult Dorot for the assembly design to fit your needs.

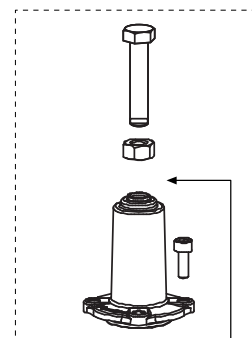
### Springs adjustment range

Spring number	Color	bar	psi
67 (Std.)	Red	2 - 16	30 - 230
66	Green	0.8 - 13	10 - 190
78	Yellow	0.4 - 3.5	6 - 50

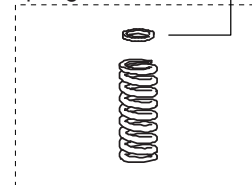
Adjustment: Turn the adjusting screw clockwise to increase the set point

### Spare parts

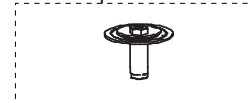
#### Bonnet kit



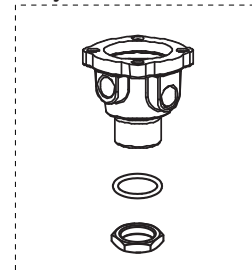
#### Spring



#### Internal parts kit



#### Body kit



### Catalogue numbers

Description	Catalogue number
Bonnet kit	661026821500000
Spring 67 - Red	0022067000
Spring 66 - Green	0022066000
Spring 78 - Yellow	0022078000
Internal parts kit	661206821500000
Body kit	661016821500000